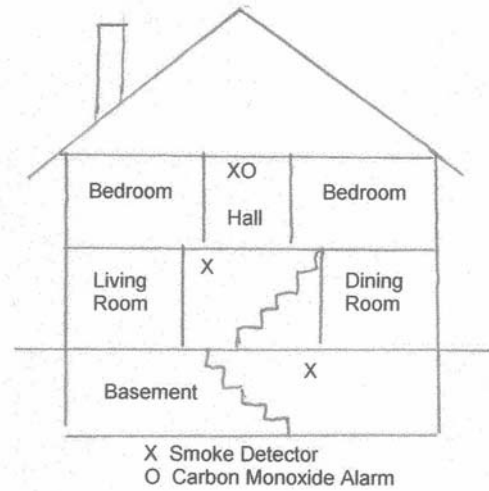
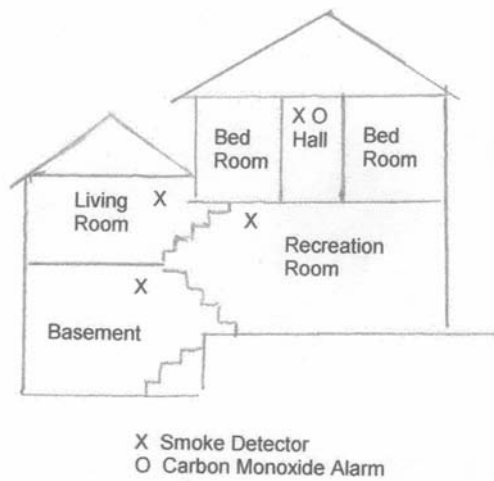
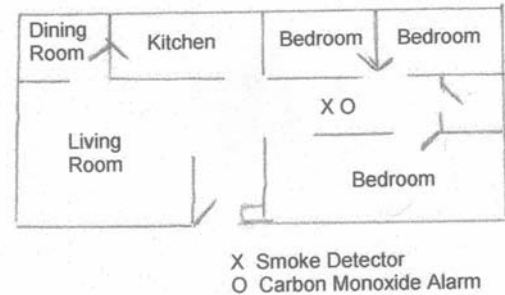
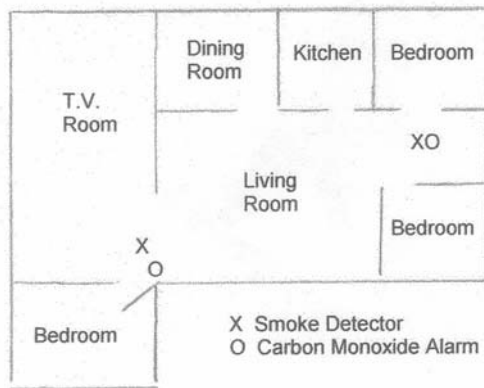


PROPER PLACEMENT OF SMOKE & CARBON MONOXIDE DETECTORS



TYPES OF FLOOR PLANS



IN FAMILY LIVING UNITS WITH MORE THEN ONE BEDROOM AREA OR BEDROOMS ON DIFFERENT LEVELS, SMOKE & CARBON MONOXIDE DETECTORS ARE REQUIRED BY EACH.

SMOKE DETECTORS MUST BE INSTALLED ON EVERY LEVEL OF THE HOME, INCLUDING THE BASEMENT.

CARBON MONOXIDE DETECTORS MUST BE INSTALLED BY THE BEDROOMS OR AS PER MANUFACTURERS SPECIFICATIONS.

EXISTING FIRE ALARM SYSTEMS MUST BE IN WORKING ORDER, EVEN IF THESE DETECTORS EXCEED STATE REQUIREMENTS.

BATTERY POWERED SMOKE DETECTORS ARE NOT TO BE SUBSTITUTED FOR HARDWIRED SMOKE DETECTORS.

BATTERY POWERED SMOKE DETECTORS MAY BE INSTALLED IF A NEW DETECTOR IS NEEDED IF ONE WAS NEVER INSTALLED AND THE BOCA BUILDING CODE DOES NOT REQUIRE A HARDWIRED ONE.

CERTIFICATES CANNOT BE ISSUED UNTIL ALL SMOKE AND CARBON MONOXIDE DETECTORS ARE WORKING PROPERLY.